



ITT

Bell & Gossett®

i-ALERT™ Condition Monitor

Reduce routine maintenance and repair costs! Minimize pump downtime!



Installs directly
to the pump with
easy to see and
read LED lights.



- Continuously measures vibration and temperature at the outboard bearing.
- Predictive condition monitoring minimizes pump life cycle costs.
 - Flashing red lights alert possible trouble
 - Alarm mode easily recognized during walk-arounds
 - Identify root cause
 - Solve problem before catastrophic failure





- Measures vibration and temperature every five minutes.
- Alarms if two consecutive readings of "high" levels.
- Alarm levels include:
 - Vibration: 100% increase over baseline level (0.125 inch/sec minimum), or 0.50 inch/sec.
 - Temperature: 195°F (91°C)
- Accuracy: $\pm 15\%$ across temperature range
- Ambient temperature range: -40°F to 212°F (-40°C to 100°C)
- Battery: 3 to 5 year life, low voltage, non-replaceable, 3 volt lithium
- CSA Certification for US and Canada
- Patented design based on over 150 years of ITT pump experience and innovation.
- Dimensions: 2.25" x 1.5" x 0.625" (57mm x 38mm x 16mm)
- Material: Stainless Steel enclosure, electronics potted in epoxy

Description

The i-ALERT™ Condition Monitor is a compact, battery-operated monitoring device that continuously measures the vibration and temperature of the pump power end. The condition monitor uses blinking red LEDs to alert the pump operator when the pump exceeds pre-set vibration and temperature limits. This allows the pump operator to make changes to the process or the pump before a catastrophic failure occurs. The condition monitor is also equipped with a single green LED to indicate when it is operational and has sufficient battery life.

Monitoring

The condition monitor is ready for activation when the pump is running and has reached a steady flow, pressure, and temperature. Place a small magnet on the condition monitor over the ITT logo and then remove it. When the condition monitor is activated it:

1. Displays a series of red LEDs followed by a solid green LED.
2. Collects eight samples that are spaced one second apart.
3. Averages these readings to establish the baseline vibration level.
4. Flashes a green LED after approximately twelve seconds.

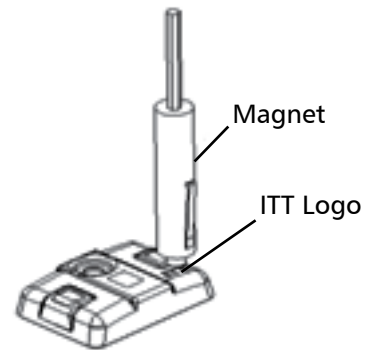
For the first ten minutes, the green LED flashes every second for five consecutive flashes and then pauses to take a vibration reading. More frequent measurements (every six seconds) are taken in this startup period so that an alarm can be immediately detected.

Mode

Normal operating mode (One Green LED)
Alarm mode (Two Red LED's)

Measurement interval

Five minutes
Two minutes



When the condition monitor measures a reading beyond the specified temperature and vibration limits, the appropriate red LED's flash. After the process or pump condition that causes the alarm is corrected, the condition monitor returns to normal mode after one normal-level measurement.

ITT Corporation
8200 N. Austin Ave.
Morton Grove, IL 60053
Tel: (847) 966-3700
Fax: (847) 966-9052
www.bellgossett.com



Engineered for life